

FOR VILLAGE B

Village B

Village A

1

If you build a school here:

- It takes 45 minutes for your children to walk to school.
- You need to pay: 3 EIC dollars per child

2

If you build a school here:

- It is very near to your village.
- You need to pay: 3 EIC dollars per child

Village C

If you build a school here:

- It takes 2 hours and a half. Also, They have to cross the river.
 - It costs extra money to build a stronger bridge for your children.
- You need to pay: 4 EIC dollars per child

4

3

If you build a school here:

- It takes 3 hours for your children to go to school.
- You don't like this option!
You need to pay: 3 EIC dollars per child

Village D

Village B

Household 1

You have:
1 child



You want to build a school so that your only boy can attend. But, you don't want your son to walk to a school so far away.

Please read the location map and decide where you want the school to be built.

☆ **Your mission:** to be to able to send **ALL** of your children to school.

🐿 Your village is specialized in forestry. You have a lot of wood and a big wood factory. .

Village B

Household 2

You have:
4 children



You want to build a school so that your children can attend. But, you don't want your children to walk to a school so far away.

Please read the location map and decide where you want the school to be built.

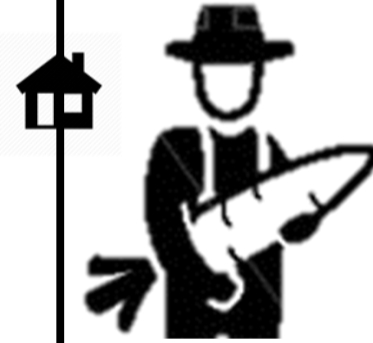
☆ **Your mission:** to be to able to send **ALL** of your children to school.

🐿 Your village is specialized in forestry. You have a lot of wood. Some of the wood is very profitable.

Village B

Household 3

You have:
2 children

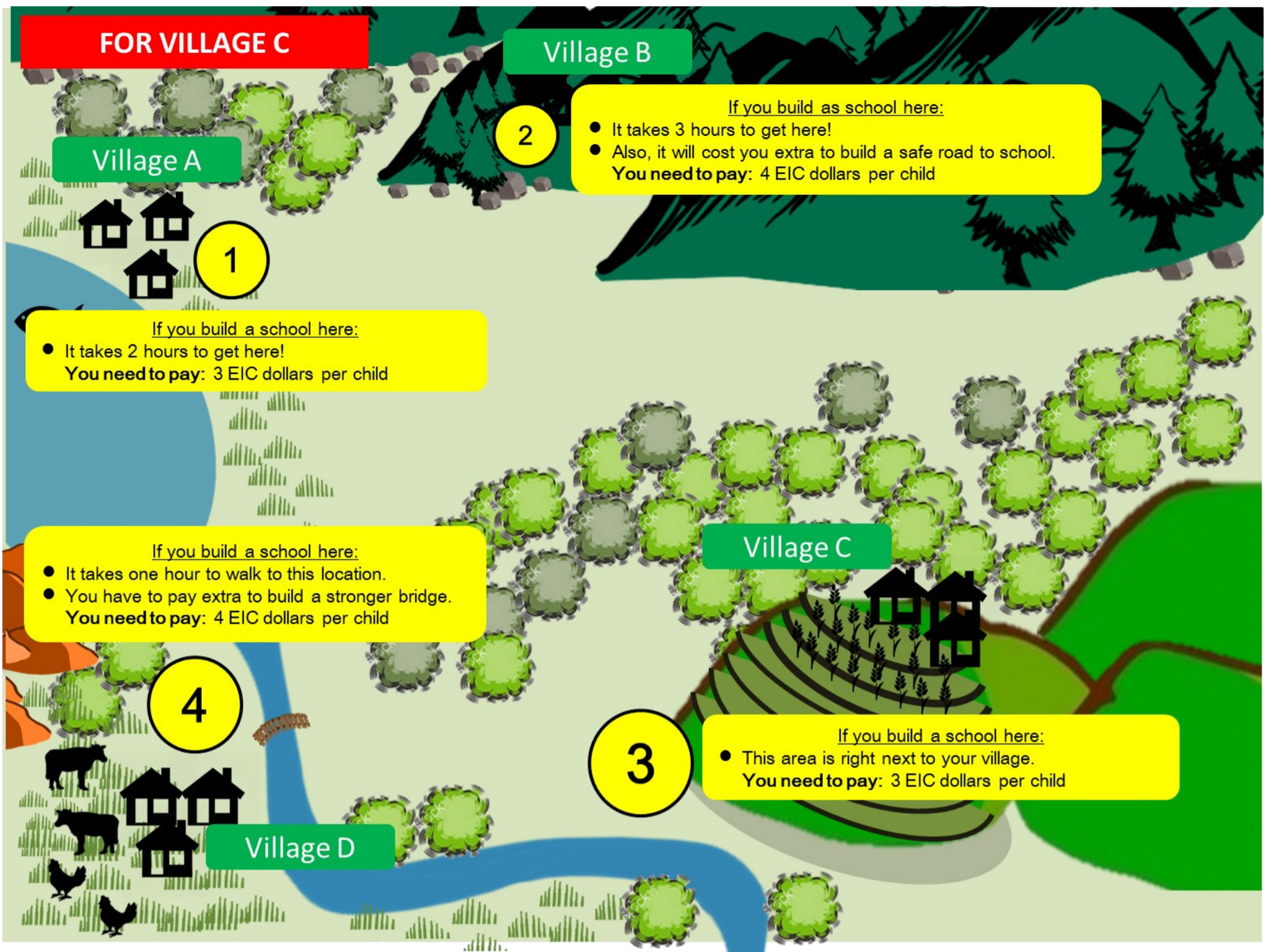


You want to build a school so that your girls can attend. But, you don't want your girls to walk to a school so far away. It can be very dangerous!

Please read the location map and decide where you want the school to be built.

☆ **Your mission:** to be to able to send **ALL** of your children to school.

🐿 Your village is specialized in forestry. Your household is good with making wooden products. .



FOR VILLAGE C

Village A

1

If you build a school here:
 • It takes 2 hours to get here!
 You need to pay: 3 EIC dollars per child

2

Village B

If you build a school here:
 • It takes 3 hours to get here!
 • Also, it will cost you extra to build a safe road to school.
 You need to pay: 4 EIC dollars per child

Village C

3

If you build a school here:
 • This area is right next to your village.
 You need to pay: 3 EIC dollars per child

4

Village D

If you build a school here:
 • It takes one hour to walk to this location.
 • You have to pay extra to build a stronger bridge.
 You need to pay: 4 EIC dollars per child

Village C Household 1

You have: 4 children

You want to have a school for your children. You don't want your children to attend schools so far away. You need them to be at home and help you with farming. The harvesting season is coming soon but you don't have enough people.

☆ **Your mission:** to be to able to send **ALL** of your children to school.

▲ If the route takes about one hour: you only want to send **ONE** child to school.
 ▲ If the route takes more than 2 hours: you **DON'T WANT** to send any children to school

🏞️ Your village has a big hill at the back of the village.

Village C Household 2

You have: 3 children

You want to have a school for your children. You don't want your children to attend schools so far away. You need them to be at home and help you with farming. The harvesting season is coming soon but you don't have enough people.

☆ **Your mission:** to be to able to send **ALL** of your children to school.

▲ If the route takes about one hour: you only want to send **ONE** child to school.
 ▲ If the route takes more than 2 hours: you **DON'T WANT** to send any children to school

🏞️ The hill at the back of the village can be good to grow any types of trees.

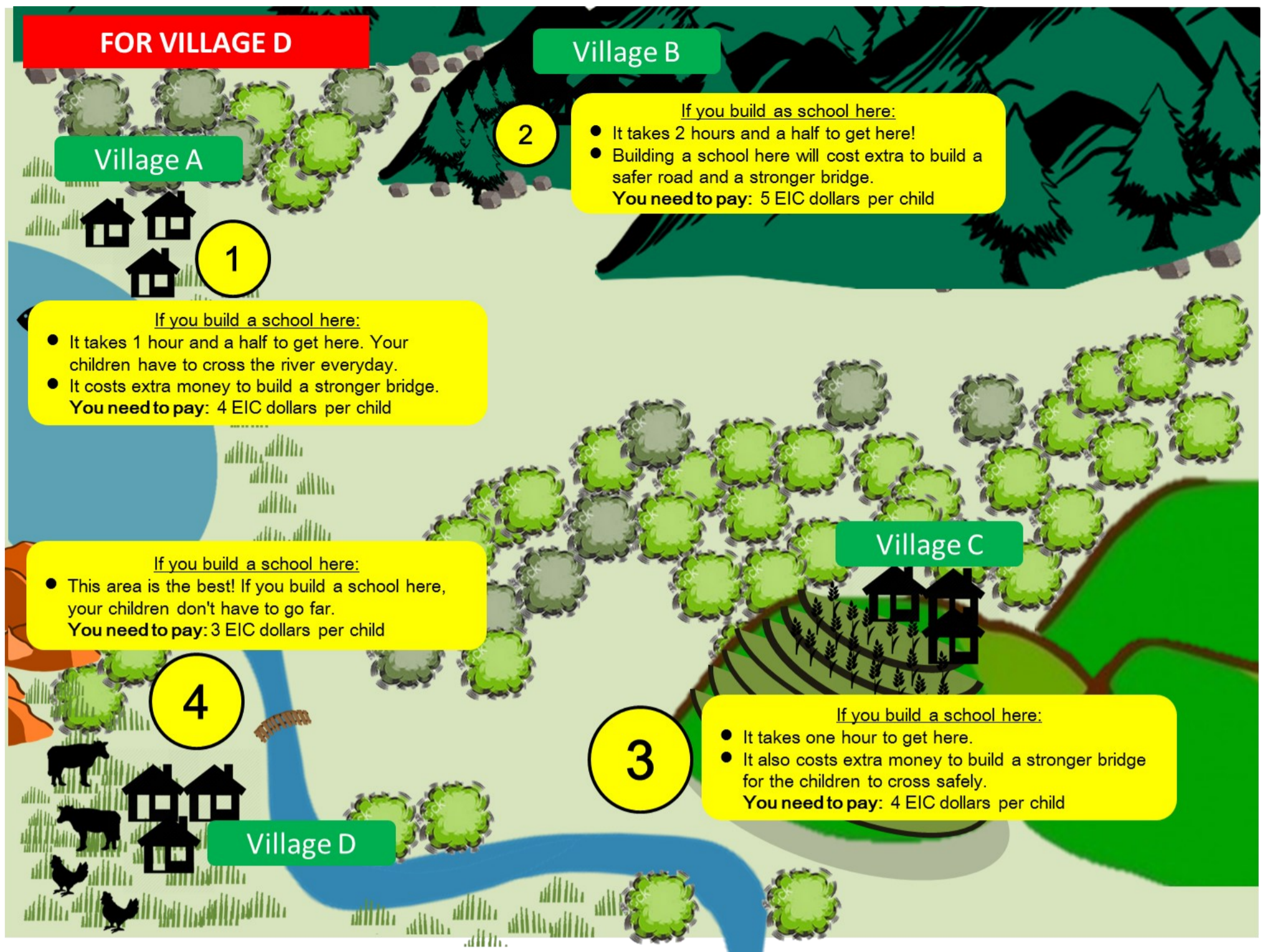
Village C Household 3

You have: 3 children

You want to have a school for your children. You don't want your children to attend schools so far away. You need them to be at home and help you with farming. The harvesting season is coming soon but you don't have enough people.

☆ **Your mission:** to be to able to send **ALL** of your children to school.

▲ If the route takes about one hour: you only want to send **ONE** child to school.
 ▲ If the route takes more than 2 hours: you **DON'T WANT** to send any children to school



Village D Household 1

You have: 4 children

You want to have a school for your children. You want them to study and have a better future. Please read the location information and decide where you want the school to be built.

☆ **Your mission:** to be able to send ALL of your children to school.

🐄 You have a lot of kettles such as cows and buffalo. They breed very well.

Village D Household 2

You have: 3 children

You want to have a school for your children. You want them to study and have a better future. Please read the location information and decide where you want the school to be built.

☆ **Your mission:** to be able to send ALL of your children to school.

🐄 You have a lot of kettles such as cows and buffalo. You can use them for farming.

Village D Household 3

You have: 1 child

You want to have a school for your children. You want them to study and have a better future. Please read the location information and decide where you want the school to be built.

☆ **Your mission:** to be able to send ALL of your children to school.

🐄 You have a lot of kettles such as cows and buffalo. They are very profitable.